



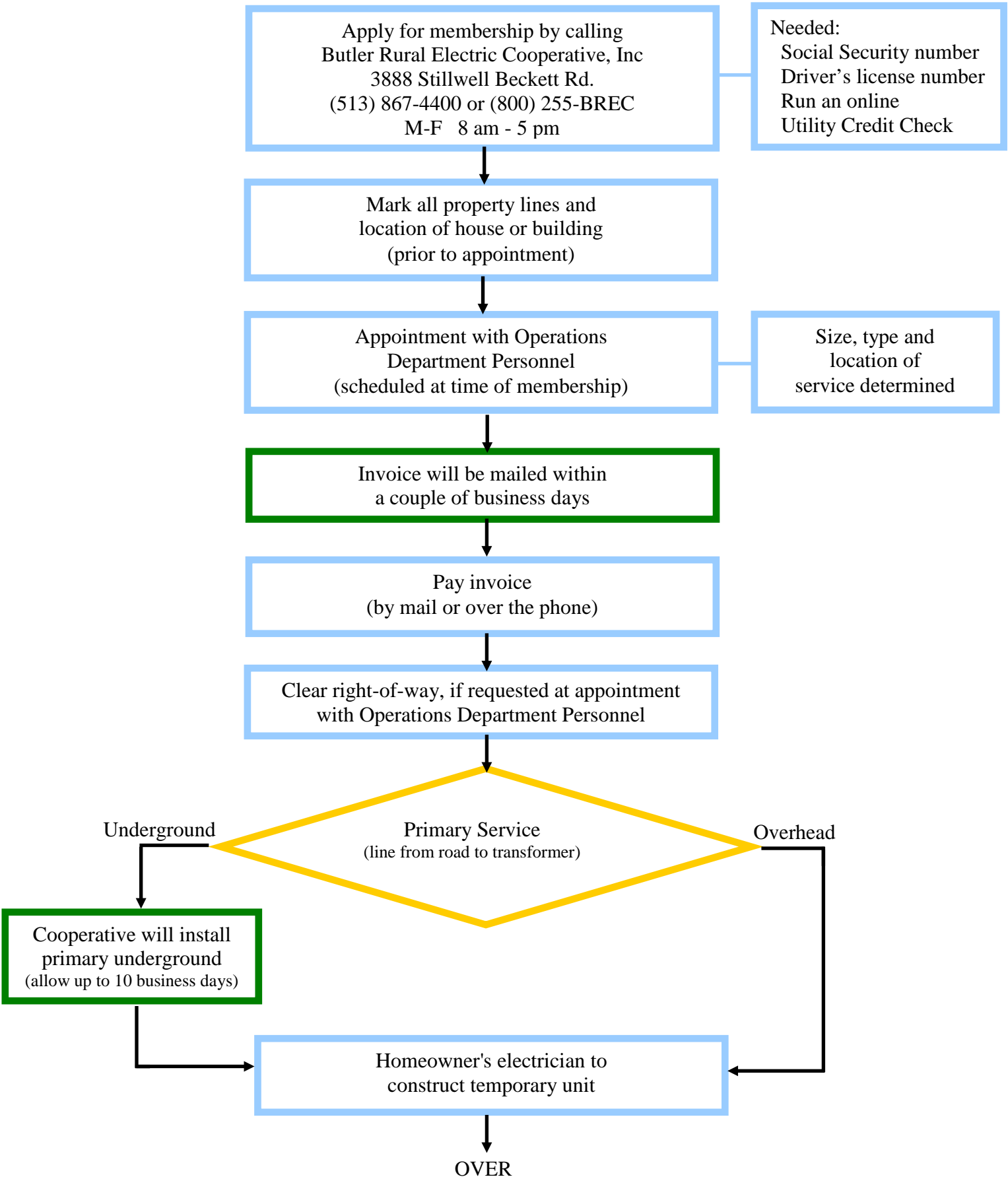
# Butler Rural Electric Cooperative, Inc.

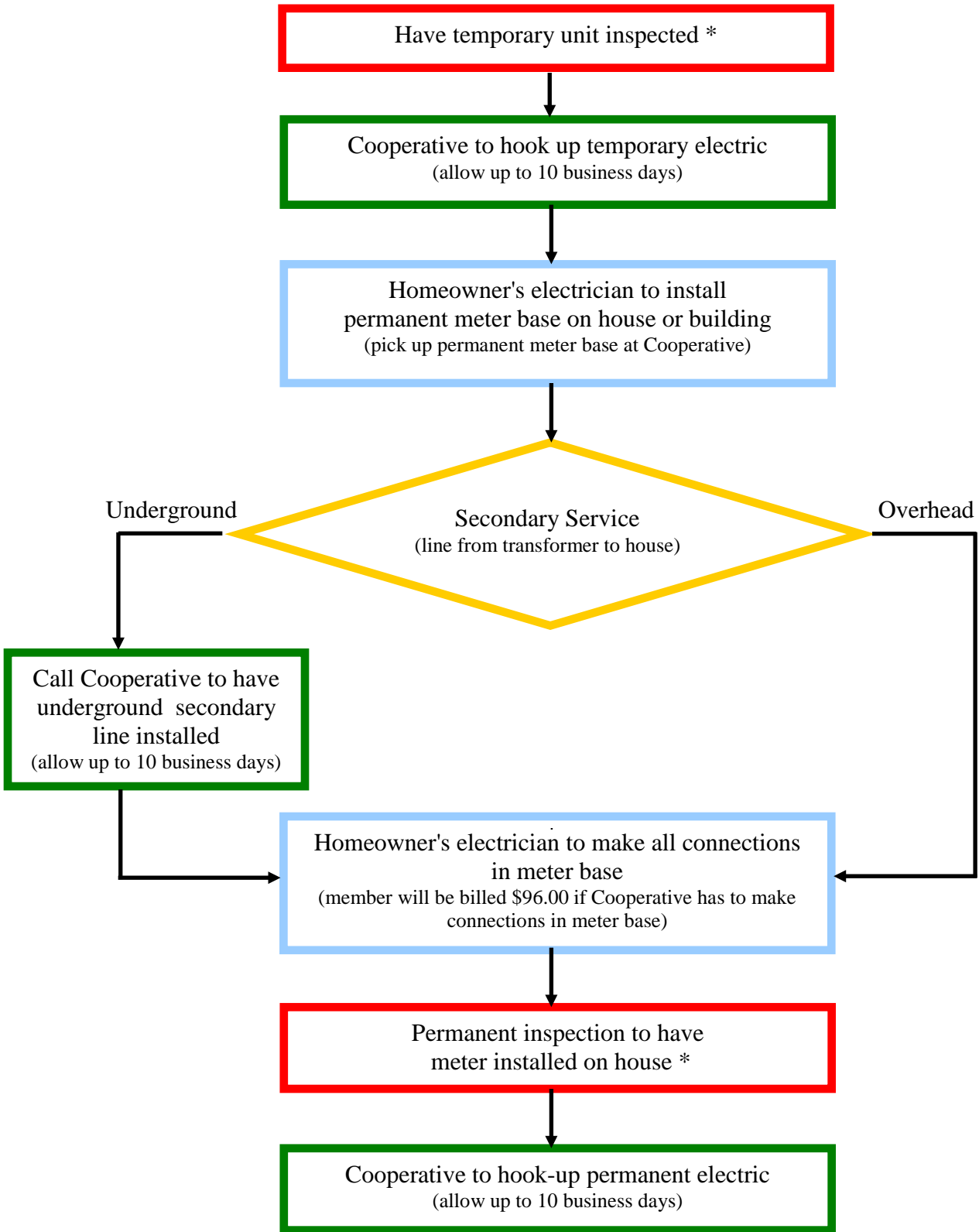
Your Touchstone Energy® Partner 

## STEPS FOR INSTALLATION OF ELECTRICAL SERVICE TO A NEW RESIDENTIAL HOME

**COLOR KEY**

- Action to be taken by member
- Action to be taken by Cooperative
- Inspection by building and zoning
- Decision by member





**\* Local Building and Zoning Phone Numbers**

Butler County	(513) 887-3205
City of Eaton	(937) 456-7155
City of Fairfield	(513) 867-5318
City of Oxford	(513) 524-5205
Hamilton County (IBI)	(513) 381-6080
Montgomery County	(937) 225-4630
Preble County (NIC)	(937) 433-4642

**NOTE:** Call the day after the inspection to make sure that the Cooperative received a faxed copy of the inspection.